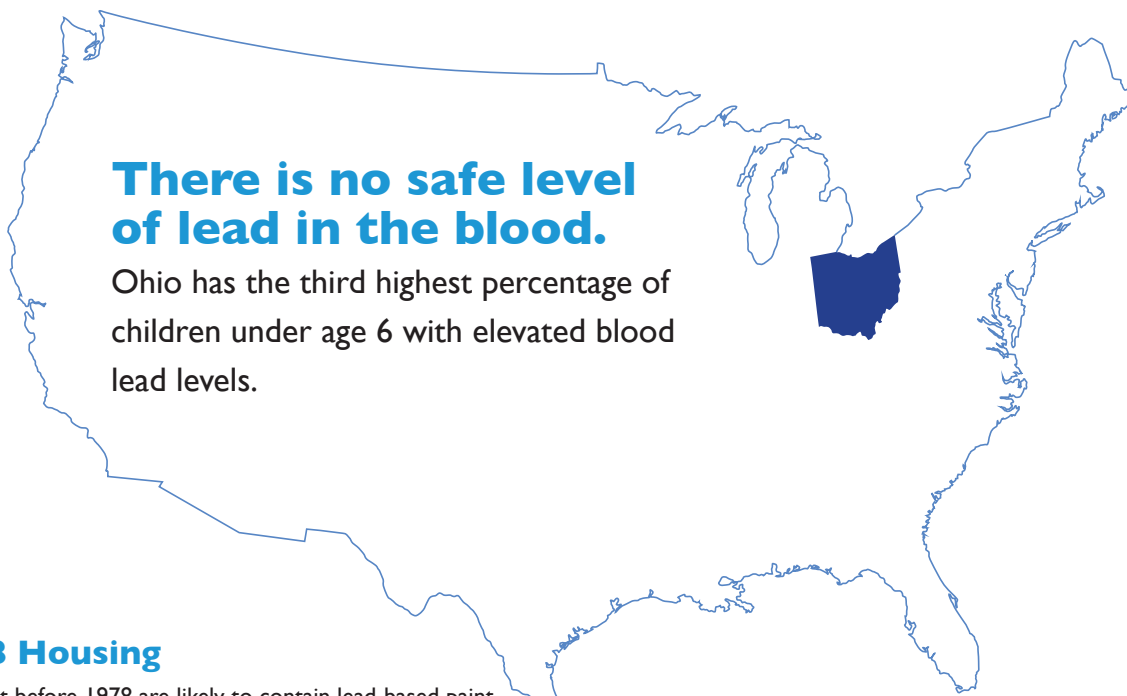


# CHILDHOOD LEAD POISONING



## There is no safe level of lead in the blood.

Ohio has the third highest percentage of children under age 6 with elevated blood lead levels.

### Pre-1978 Housing

- Houses built before 1978 are likely to contain lead-based paint.
- Ohio's large burden of elevated blood lead levels can be attributed to the age of Ohio's housing stock as well as the lack of maintenance and deterioration of some homes. The systemic disinvestment in certain neighborhoods, disproportionately affecting minority communities, has resulted in high lead exposure risk in those communities.

### Sources of Lead Exposure

Ways children can be exposed to lead:



Lead-based paint dust/chips



Occupational take-home lead



Water



Food/herbs



Soil



Toys



Cosmetics and ceremonial powders\*

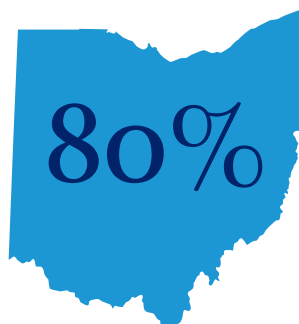


Spices\*



Traditional medicine\*

\* Kids born abroad are a potential high-risk population, as cosmetics, spices and folk remedies from abroad are a less common, but not rare source of exposure.



**80%** of Ohio's lead poisoning cases result from dust created by deteriorated lead-based paint in **houses built before 1978.**